

Valued Customer,

As manager of your farm operations, you do all you can to improve performance. Along with the right equipment and dealer support, you also need data and technology to accomplish this. That's where John Deere Operations Center and the connected mobile apps come in. They are a set of online tools that help you **SEE** what is happening, **COLLABORATE** with your trusted advisors and preferred software for insights, and **DIRECT** your operations with precision.

Please read through the information below and click on the YouTube Video links at the end of this document.



When you buy John Deere equipment you expect reliability.

You should, because Nothing Runs like a Deere.

You also know that when you're in the field the unexpected can happen.

When it does, you need a quick resolution.

That's why John Deere equipment comes prepared from the factory with technology built in.

It senses potential issues and can alert you promptly—in the cab or anywhere you are.

Better yet, your dealer can receive alerts and connect to your equipment.

You know your dealer is always ready to keep you farming—and farming better.

When you connect your machine ...

You Can	Your Dealer Can
<ul style="list-style-type: none"> • Monitor alerts from the machine remotely • View the in-cab display from wherever you are • Monitor machine location, its prior path and coverage • Monitor fuel level and idle time 	<ul style="list-style-type: none"> • Monitor alerts coming from your machine • Diagnose problems remotely to get you back running faster • View the in-cab display to help you setup your machine • Perform software updates from the dealership

Most new John Deere machines come ready with 5 years of machine connectivity to enable these tools that you keep running. If you have an existing machine capable of connecting, we'll connect it free of charge*. Visit your John Deere Dealer today.



JDLink™ Connect



Agronomic data from your in-cab displays, like yield maps and as-applied data, becomes even more powerful when you can access and use it remotely, away from the field. Your data becomes more powerful when you can access it when you need it and where you need it. Sending it from the field immediately and automatically can also prevent it from getting lost. That's why we recommend upgrading your machine connection to **JDLink Connect**.

JDLink Connect opens an information pipeline between you and your machines, so the technology on your equipment can "talk" to you. In addition, you can tell your machines what to do and have them report back. Two-way communication is powerful and essential for success. With JDLink Connect you get a steady, automatic flow of agronomic data between your machines and the devices you use to manage your operation, so you can make sound, timely decisions for your farm—wherever, whenever.

To see, share, and use your data, you'll have access to the John Deere Operations Center and the connected mobile apps.

The **John Deere Operations Center** is an online set of tools you can use to manage your farming operation. As data flows into your Operations Center, you can:

- See what's happening now and learn from your performance over time.
- Collaborate with others who support your operation, granting them easy, instant access to the data they need—so they can give you even better support and insights.
- Direct your business by creating action plans, prioritizing jobs, and communicating next steps to others.

The **MyOperations & MyAnalyzer Apps** complement the John Deere Operations Center to allow you to easily leverage data from your connected machine while on the go – putting the Operations Center in your pocket.

Remember, when you choose to use the John Deere Operations Center, you are always in control of your data. When you entrust your data to John Deere we safeguard that data and honor the permissions you set for sharing it with others. Visit [JohnDeere.com/trust](https://www.johndeere.com/trust) to learn more.

The JDLink Connect service is available by subscription. When you purchase new Ag equipment, one year of JDLink Connect and 5 years of John Deere Connected Support are included standard.



WHY USE DATA? Make a good farm even better	HOW TO START Take baby steps	WHAT TOOLS TO USE Build your own data toolbox
<p>Improve Performance</p> <ul style="list-style-type: none"> • Learn what practices work and don't work. • Save money by getting the most out of time and resources. <p>Increase Yield</p> <ul style="list-style-type: none"> • Learn which inputs and rates work best and where for repeatable gains. • Identify ways to improve yield consistency across the farm. <p>Benefit From Insights</p> <ul style="list-style-type: none"> • Studies show that decisions made based on multiple years of data are more accurate. • Data allows you to share your information easier so experts can quickly add depth to your experiences. 	<p>Collect it</p> <ul style="list-style-type: none"> • Ensure equipment can record the field work. Most newer equipment is ready and older equipment can be updated. • Start with machine and harvest data. It is the easiest to understand and you can grow from there. <p>Use it</p> <ul style="list-style-type: none"> • Get harvest data into a form you can review. This means software or a cloud based tool! • Review as-applied data (planting, crop nutrition or crop protection data) or other data layers compared to yield data. This is your first step towards insights. • Use field data to control your equipment to maximize yield while minimizing costs with tools like variable rate and section control. <p>Share it</p> <ul style="list-style-type: none"> • Don't work alone—start looking for additional analysis and insights with the help of partners like ag retailers and agronomists. • John Deere dealers also provide help through data and other services to make implementing data tools easier. They already know your operation—take advantage! 	<p>Data Collection</p> <p>Collect the data as field work is performed.</p> <ul style="list-style-type: none"> • Gen4 CommandCenter™ • GreenStar™ 3 2630 Display <p>Data Transmission</p> <p>Manually moving data with a USB works, but it can be easier.</p> <ul style="list-style-type: none"> • JDLINK™ Connect (Automatic, wireless) • Mobile Data Transfer (Uses smartphone) <p>Data Viewing and Sharing</p> <p>Once the data is off the machine, it's ready to use—and the tools below are at no extra cost.</p> <ul style="list-style-type: none"> • John Deere Operations Center Access your information anytime, anywhere to see, collaborate and direct your operation with precision. • MyOperations & MyAnalyzer Apps Operations Center information in your pocket for when you're on the go.



What are 5 ways Operations Center can help me farm better?

Reduce Costs	Increase Yields	Share for Insights	Farm More Acres	Pick Your Solution
<p>A mistake in the cab today can spell yield losses tomorrow. Reduce operator errors, spend less time at the edge of the field, and ensure the job is documented correctly with Setup Files and Rx- sent wirelessly to the in-cab display with JDLink™ Connect.</p>	<p>Decisions should be backed by data, and good agronomic decisions can increase your yields and decrease costs. The Field Analyzer tool, MyAnalyzer™ app and Agronomic Reports make it easy to analyze your past to understand what worked and what didn't.</p>	<p>Sometimes you need expert advice or a different tool for the job. Automatically share machine and agronomic data with your trusted advisors and preferred software tools. Get Rx, scouting info and other insights back into Operations Center for more confident decisions.</p>	<p>In the field or on the go, you still need access to information about your farm in order to run efficiently. MyOperations™ and other connected mobile apps put the power of Operations Center and JDLink™ Connect in your hand, at no additional cost.</p>	<p>You don't have to be all green in order to have all your data accessible in one place. Compatibility starts with Precision Planting®, Ag Leader® and Raven® doc data- so you spend less time managing multiple data analysis tools and more time farming.</p>

Remember, when you choose to use John Deere Operations Center, you are always in control of your data. When you entrust your data to John Deere, we safeguard that data and honor the permissions you set for sharing it with others. Visit JohnDeere.com/trust to learn more.

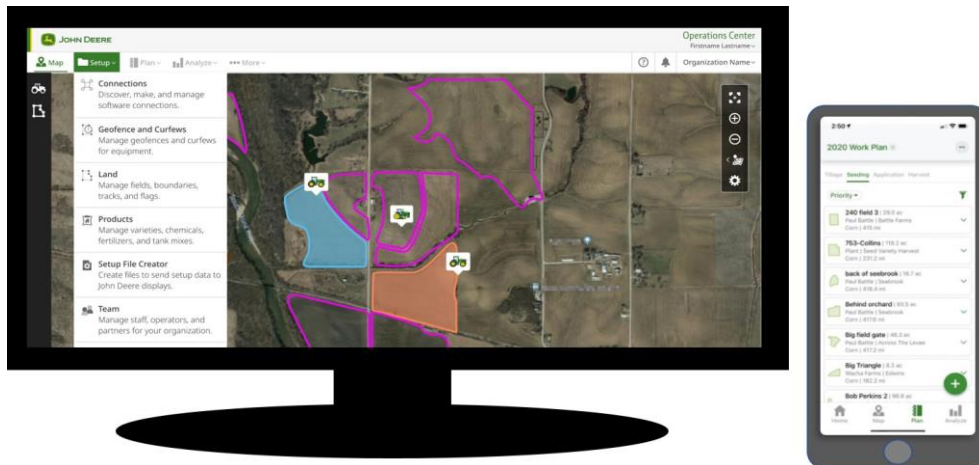
JDLink™ Connect service is available by subscription. When you purchase new Ag equipment, one year of JDLink™ Connect and 5 years of John Deere Connected Support are included. To start your organization on Operations Center, visit your John Deere Dealer today!

January 2021 Operations Center Update



Operations Center navigation updates:

More easily find where you need to go to get work done in Operations Center web. New sections in Operations Center web are similar to those in Operations Center mobile for a more simplified farm management experience. Each tool within Operations Center web has a brief description to provide more information about what the tool does.



MyOperations renamed to Operations Center mobile:

To streamline the web and mobile experience, MyOperations has been renamed to Operations Center mobile. New headers across every tab of the mobile app make common functions easier to access.

New Work Planner Solution:

Introducing a new fully integrated planning experience that turns work planned into an automated setup experience and removes the operator guess work in the field:


- * Plan work from anywhere, with any device, on the web or mobile app
- * Transfer planned work to your equipment
- * Enter work setup details with one touch on the Generation 4 Display
- * Analyze completed work in Operations Center web or mobile



What's New:

- * New Work Planner tool in Operations Center web
- * New Plan tab in Operations Center mobile
- * Send planned work to the Generation 4 Display (4200, 4240, 4600, 4640) from either web or mobile from anywhere

NOTE: The previous jobs solution including Work Manager, MyJobs and the MyJobsManager mobile app have been discontinued. Job Reports in the web will be discontinued in May 2021

 JOHN DEERE

Map

Setup

Plan

Analyze

More

Operations Center

Thomas Rohret

Toms Farm

Season

2020

Complete

Send to Equipment

Delete

Plan Seeding

Tillage

Seeding

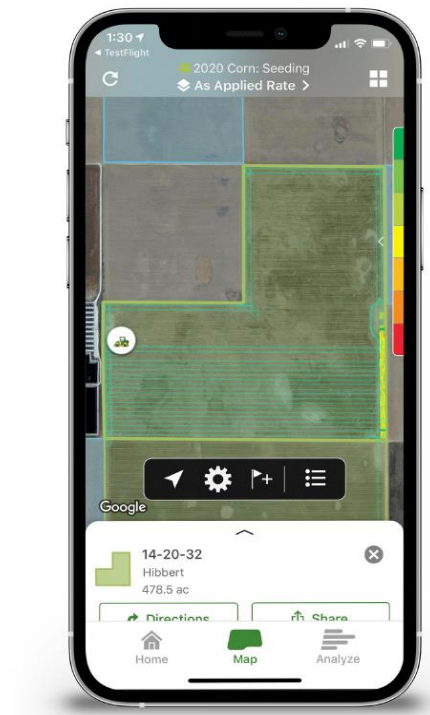
Application

Harvest

<input type="checkbox"/>	Field	Area (ac)	Crop	Variety/Product	Rate	Guidance	Equipment	Work Order
<input type="checkbox"/>	<div><div></div><div>J5 Jim James</div></div>	61.93	Cotton	<div>mix DP 1612 B2XF</div>	<div>15 gal/ac2,500 seeds/ac</div>	<div>3</div>	<div>1</div>	123
<input type="checkbox"/>	<div><div></div><div>South East 20 Home Cross Roa...</div></div>	22.66	Cotton	<div>mix DP 1612 B2XF</div>	<div>15 gal/ac3,000 seeds/ac</div>	<div>2</div>	<div>1</div>	123
<input type="checkbox"/>	<div><div></div><div>J5 Jim James</div></div>	61.93	Cotton	<div>Aim DP 1612 B2XF</div>	<div>20 gal/acPrescription</div>	<div>3</div>	<div>2</div>	1234
<input type="checkbox"/>	<div><div></div><div>South East 20 Home Cross Roa...</div></div>	22.66	Cotton	<div>Aim DP 1612 B2XF</div>	<div>---</div>	<div>2</div>	<div>2</div>	1234
<input type="checkbox"/>	<div><div></div><div>South East 20 Home Cross Roa...</div></div>	22.66	Cotton	<div>Aim DP 1612 B2XF</div>	<div>20 gal/ac3,500 seeds/ac</div>	<div>2</div>	<div>1</div>	12345

Changes starting in Spring 2021

Equipment Location	5 seconds
Field Avg/Totals	30 seconds
Agronomic Maps	15 minutes to several hours





JOHN DEERE "YouTube" VIDEO LIBRARY:

John Deere Operations Center — January 2021 Updates (5:35 min)

<https://youtu.be/hanv4lk5bQY>

How to Improve Fleet Utilization with Web Work Planner | John Deere Operations Center (4:04 min)

<https://youtu.be/ZreNjan0D1c>

How to Organize Data using Land | John Deere Operations Center (4:35 min)

<https://youtu.be/4TbVEyxix70>

How to Edit Precision Ag Data in Field Analyzer | John Deere Operations Center (3:27 min)

<https://youtu.be/AUo4TUiVDPw>

How to Create and Send Field Reports | John Deere Operations Center (3:10 min)

<https://youtu.be/4Kh00koTeVg>

Setting up Access in Team | John Deere Operations Center (6:09 min)

<https://youtu.be/YtvGWICUJ1Q>

Managing Machine Maintenance without a JDLink™ Internet Connection | John Deere Operations Center (3:06 min)

https://youtu.be/4oAB_Lhz0qM